



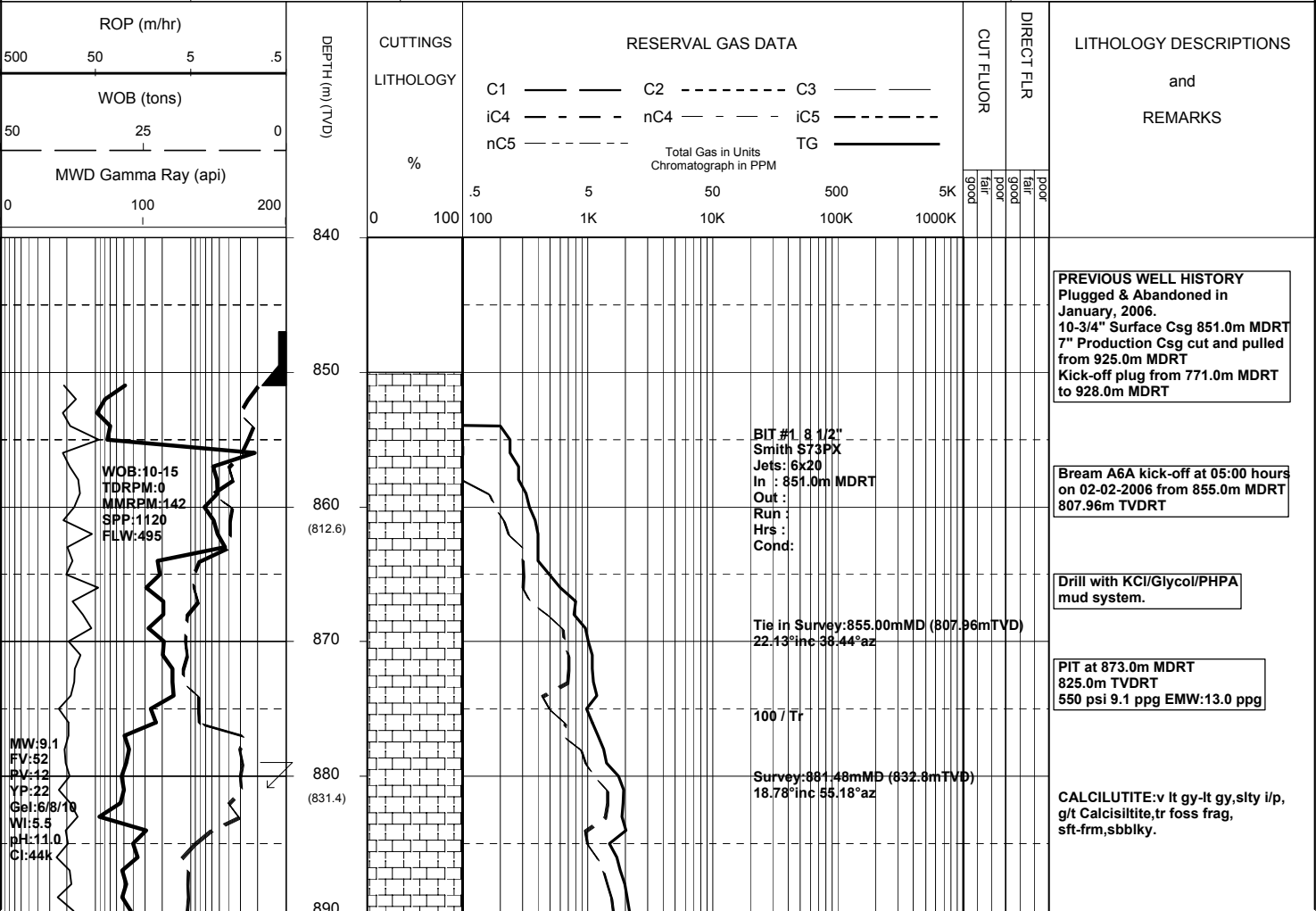
MASTERLOG

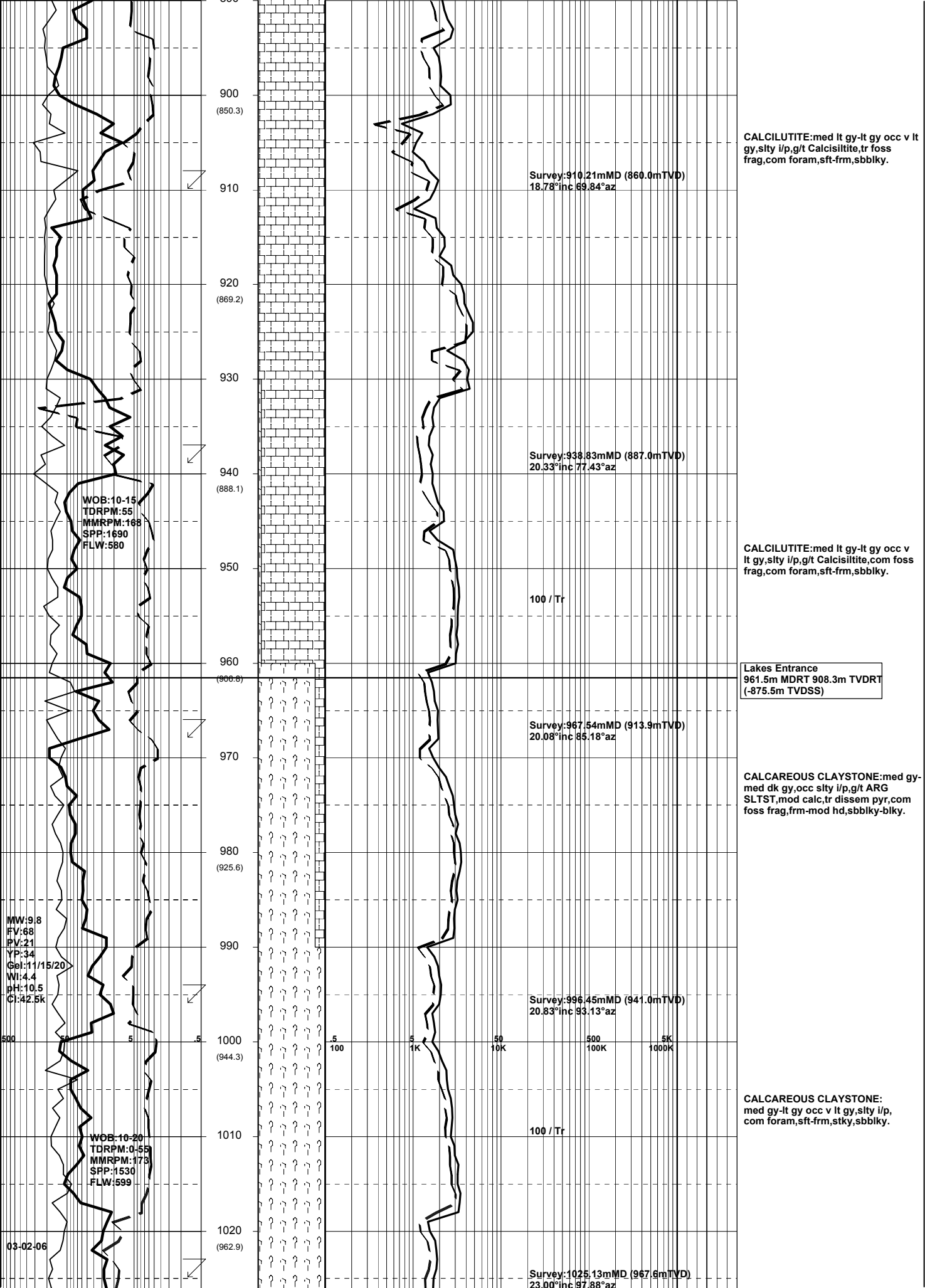
BMA A6A



GENERAL	SURFACE POSITION	HOLE / CASING INFO	DATE / DEPTH	ENGINEERS
Country : AUSTRALIA	GDA Co-ord X : 147 46 20.421 E	8-1/2" Hole to	Spud Date : 02-02-2006	Steve Oades Noel Elliott Mark Smith
Permit : VIC L13	GDA Co-ord Y : 38 29 58.784 S		Total Depth Date :	
Field : Bream	MGA Co-ord X : 567347.12mE	10-3/4" Csg Shoe at 851.0m MDRT	Total Depth :	
Basin : GIPPSLAND	MGA Co-ord Y : 5738461.49mN	7" Production Csg at	True Vertical Depth :	
Well Type : DEVELOPMENT	RT to MSL : 32.82m		Log Scale : 1/ 500	
Rig Name : NABORS 453	RT to Sea Bed : 92.22m			

ABBREVIATIONS	LITHOLOGY LEGEND	ENGINEERING LEGEND
MW Mud Weight WOB Weight on Bit (klbs) RV Funnel Viscosity RPM Rotations Per Min PV Plastic Viscosity FLW Flow Rate (gpm) YP Yield Point SPP Pump Pressure (psi) Gel Gel Strength RR Re-Run Bit WL Water Loss TG Trip Gas KCI Potassium Chloride CG Connection Gas Cl Chlorides BG Background Gas Incl Inclination DGP Drilled Gas Peak Az Azimuth MM Mud Motor	CLAYSTONE MARL BRYOZOA CARB FRAGMENT SILTSTONE LIMESTONE RADIOLARITES QUARTZITE SST: F - V FINE DOLOMITE ECHINOIDS INTRUSIVES SST: MEDIUM CHERT CORALS GLAUCONITE SST: COARSE CONGLOMERATE FORAMINIFERA PYRITE SHALE COAL LITHIC FRAGMENT CEMENT	CASING SHOE WIRELINE LOGS LINER HANGER MDT POINTS: PRESSURE ONLY SAMPLE SEAL FAILURE TIGHT CORE BIT CHANGE DEVIATION SURVEY SWC UNRECOVERED SIDEWALL CORE





CALCILUTITE: med lt gy-lt gy occ v lt gy, slty i/p, g/t Calcisiltite, tr foss frag, com foram, sft-frm, sbbiky.

Survey: 910.21mMD (860.0mTVD)
18.78°inc 69.84°az

CALCILUTITE: med lt gy-lt gy occ v lt gy, slty i/p, g/t Calcisiltite, com foss frag, com foram, sft-frm, sbbiky.

Survey: 938.83mMD (887.0mTVD)
20.33°inc 77.43°az

100 / Tr

Lakes Entrance
961.5m MDRT 908.3m TVDRT
(-875.5m TVDSS)

Survey: 967.54mMD (913.9mTVD)
20.08°inc 85.18°az

CALCAREOUS CLAYSTONE: med dk gy, occ slty i/p, g/t ARG SLTST, mod calc, tr disse pyr, com foss frag, frm-mod hd, sbbiky-blky.

Survey: 996.45mMD (941.0mTVD)
20.83°inc 93.13°az

CALCAREOUS CLAYSTONE:
med gy-lt gy occ v lt gy, slty i/p,
com foram, sft-frm, stky, sbbiky.

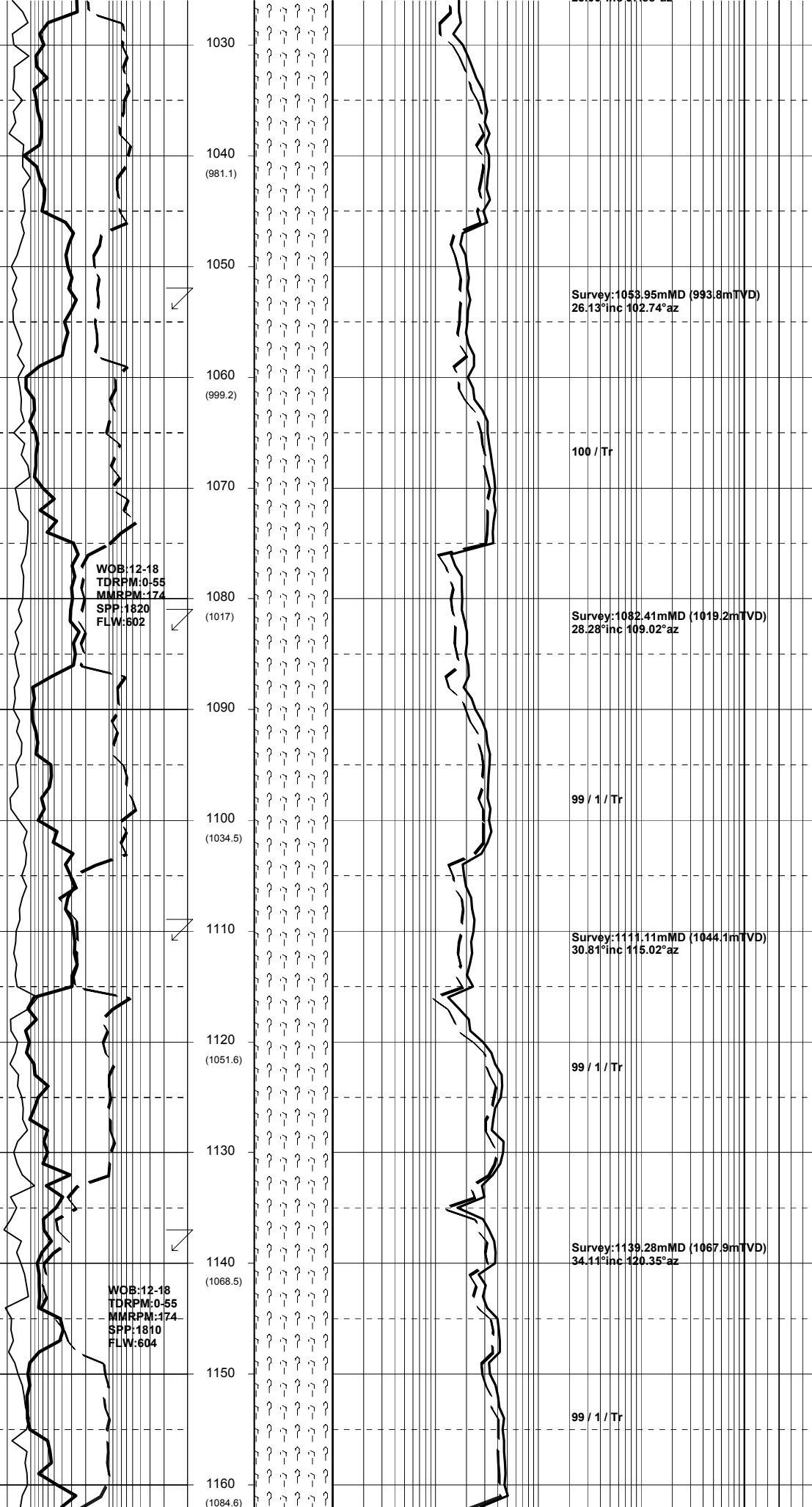
Survey: 1025.13mMD (967.6mTVD)
23.00°inc 97.88°az

MW: 9.8
FV: 68
PV: 21
YP: 34
Gel: 11/15/20
Wt: 4.4
pH: 10.5
Cl: 42.5k

WOB: 10-15
TDRPM: 55
MMRPM: 168
SPP: 1690
FLW: 580

WOB: 10-20
TDRPM: 0-55
MMRPM: 173
SPP: 1530
FLW: 599

03-02-06



1030

1040
(981.1)

1050

1060
(999.2)

1070

1080
(1017)

1090

1100
(1034.5)

1110

1120
(1051.6)

1130

1140
(1068.5)

1150

1160
(1084.6)

WOB: 12-18
TDRPM: 0-55
MMRPM: 174
SPP: 1820
FLW: 602

WOB: 12-18
TDRPM: 0-55
MMRPM: 174
SPP: 1810
FLW: 604

Survey: 1053.95mMD (993.8mTVD)
26.13°inc 102.74°az

100 / Tr

Survey: 1082.41mMD (1019.2mTVD)
28.28°inc 109.02°az

99 / 1 / Tr

Survey: 1111.11mMD (1044.1mTVD)
30.81°inc 115.02°az

99 / 1 / Tr

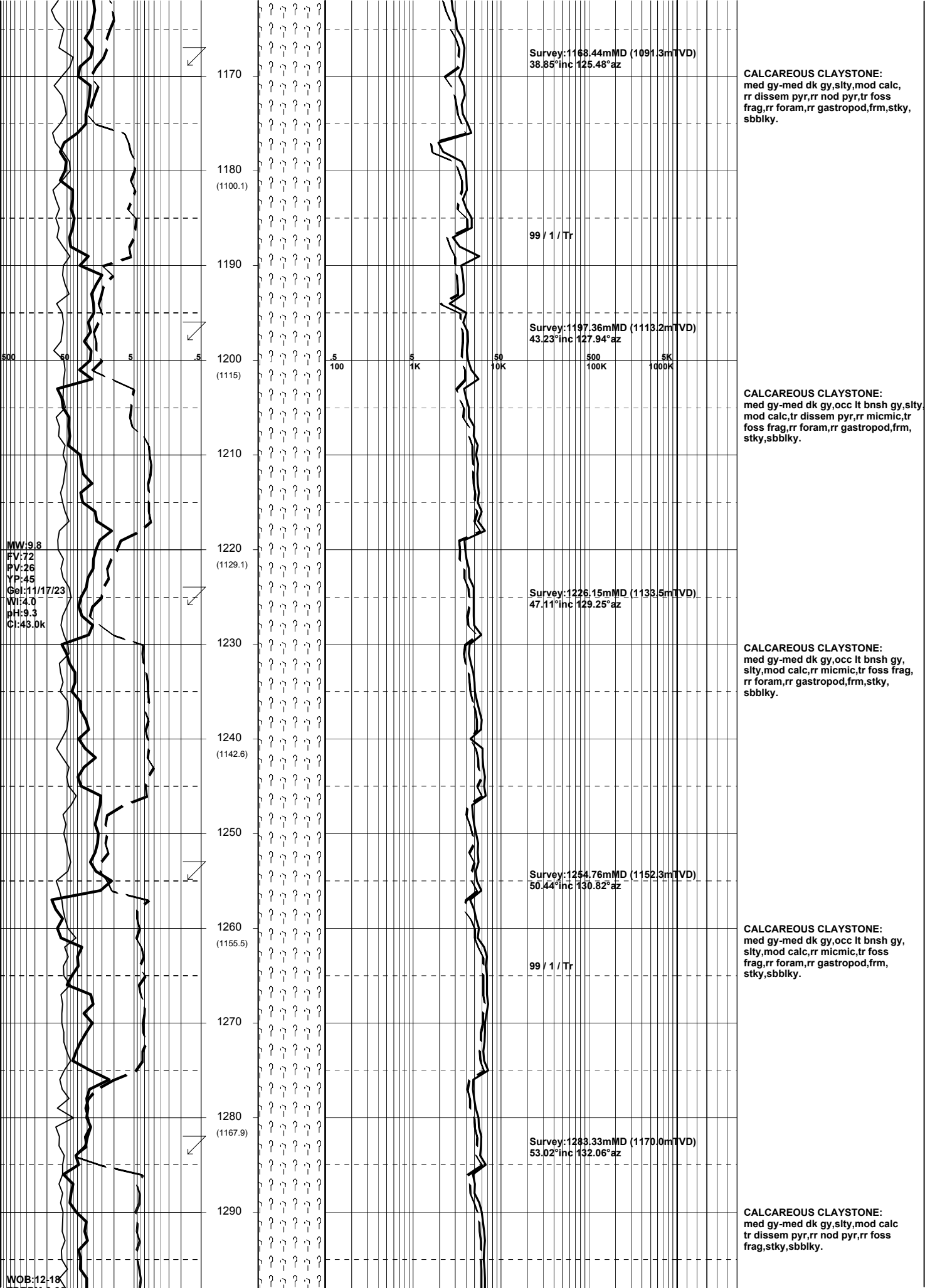
Survey: 1139.28mMD (1067.9mTVD)
34.11°inc 120.35°az

99 / 1 / Tr

CALCAREOUS CLAYSTONE:
med gy-med dk gy, slty, mod calc, rr
dissem pyr, rr nod pyr, tr foss frag,
rr foram, sft frm, stky, sbbiky.

CALCAREOUS CLAYSTONE:
med gy-med dk gy, slty, mod calc, tr
dissem pyr, rr nod pyr, tr foss
frag, rr foram, sft frm, sbbiky.

CALCAREOUS CLAYSTONE:
med gy-med dk gy, slty, mod calc, tr
dissem pyr, rr nod pyr, tr foss frag,
rr foram, sft frm, sbbiky.



Survey:1168.44mMD (1091.3mTVD)
38.85°inc 125.48°az

CALCAREOUS CLAYSTONE:
med gy-med dk gy,silty,mod calc,
rr disse pyr,rr nod pyr,tr foss
frag,rr foram,rr gastropod,frm,stky,
sbbiky.

1170

1180
(1100.1)

99 / 1 / Tr

1190

Survey:1197.36mMD (1113.2mTVD)
43.23°inc 127.94°az

CALCAREOUS CLAYSTONE:
med gy-med dk gy,occ lt bnsh gy,silty
mod calc,tr disse pyr,rr micmic,tr
foss frag,rr foram,rr gastropod,frm,
stky,sbbiky.

1200
(1115)

1210

1220
(1129.1)

Survey:1226.15mMD (1133.5mTVD)
47.11°inc 129.25°az

CALCAREOUS CLAYSTONE:
med gy-med dk gy,occ lt bnsh gy,
silty,mod calc,rr micmic,tr foss frag,
rr foram,rr gastropod,frm,stky,
sbbiky.

1230

1240
(1142.6)

1250

Survey:1254.76mMD (1152.3mTVD)
50.44°inc 130.82°az

CALCAREOUS CLAYSTONE:
med gy-med dk gy,occ lt bnsh gy,
silty,mod calc,rr micmic,tr foss
frag,rr foram,rr gastropod,frm,
stky,sbbiky.

1260
(1155.5)

1270

Survey:1283.33mMD (1170.0mTVD)
53.02°inc 132.06°az

CALCAREOUS CLAYSTONE:
med gy-med dk gy,silty,mod calc
tr disse pyr,rr nod pyr,rr foss
frag,stky,sbbiky.

1280
(1167.9)

1290

MW:9.8
FV:72
PV:26
YP:45
Gel:11/17/23
WI:4.0
pH:9.3
Cl:43.0k

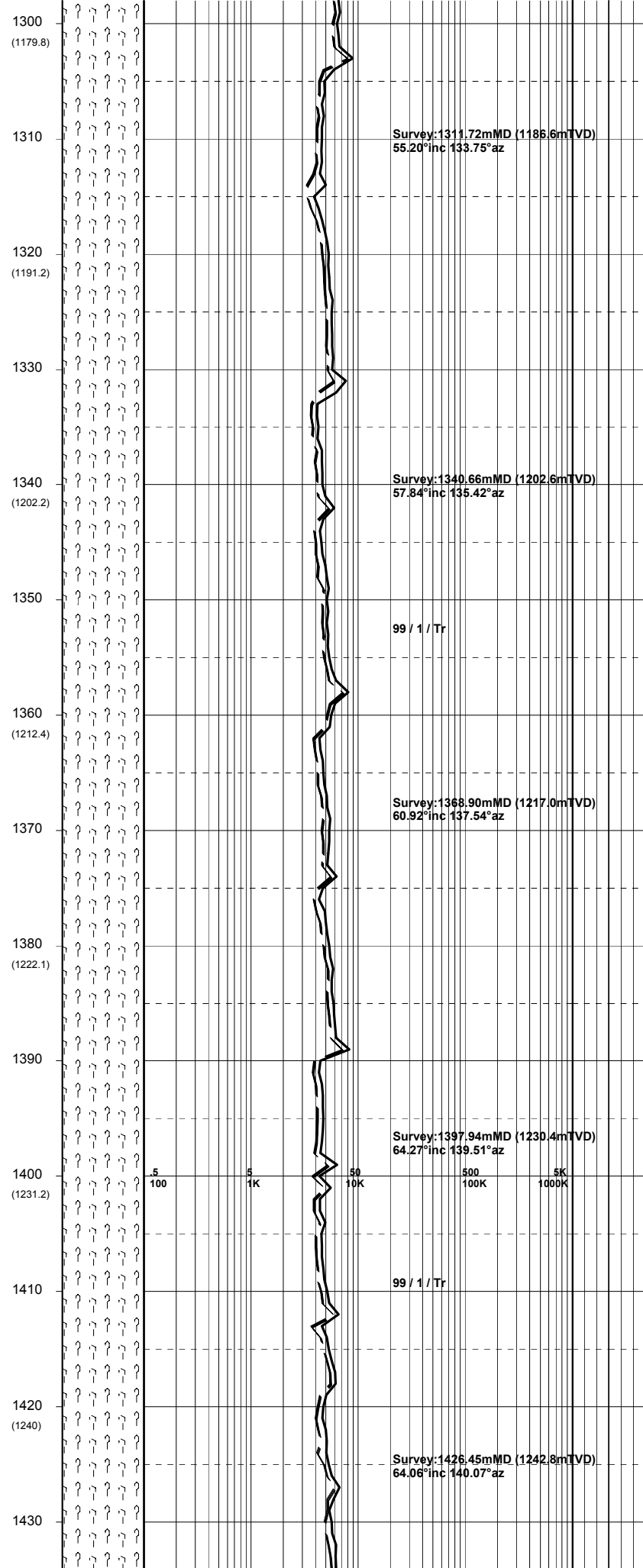
WOB:12-18

TDRPM:0-90
MMRPM:174
SPP:1980
FLW:600

MW:9.85
FV:71
PV:27
YP:42
Gel:10/16/20
Wt:3.7
pH:9.0
Cl:45.0k

04-02-06

WOB:12-18
TDRPM:0-90
MMRPM:173
SPP:1975
FLW:602



Survey:1311.72mMD (1186.6mTVD)
55.20°inc 133.75°az

CALCAREOUS CLAYSTONE:
med lt gy-lt bnsh gy,silty,mod calc,
tr disse pyr,rr foss frag,sft frm,
stky,sbbiky.

Survey:1340.66mMD (1202.6mTVD)
57.84°inc 135.42°az

CALCAREOUS CLAYSTONE:
med lt gy-lt bnsh gy,silty,
mod calc,tr disse pyr,
rr foss frag,sft frm,stky,
sbbiky.

99 / 1 / Tr

Survey:1368.90mMD (1217.0mTVD)
60.92°inc 137.54°az

CALCAREOUS CLAYSTONE:
med lt gy-lt bnsh gy,silty,
mod calc,tr disse pyr,
rr foss frag,sft frm,stky,
sbbiky.

Survey:1397.94mMD (1230.4mTVD)
64.27°inc 139.51°az

99 / 1 / Tr

CALCAREOUS CLAYSTONE:
med lt gy-lt bnsh gy,silty,
mod calc,tr disse pyr,
rr foss frag,sft frm,stky,
sbbiky.

Survey:1426.45mMD (1242.8mTVD)
64.06°inc 140.07°az

1440
(1248.7)

1450

1460
(1257.4)

1470

1480
(1265.9)

1490

1500
(1274)

1510

1520
(1282)

1530

1540
(1290)

1550

1560
(1298.1)

1570

WOB:12-18
TDRPM:0-90
MMRPM:175
SPP:2089
FLW:600

MW:9.85
FV:71
PV:24
VP:39
Gel:10/15/20
WI:3.3
pH:9.2
CI:48.0K

99 / 1 / Tr

Survey:1455.43mMD (1255.4mTVD)
64.16°inc 140.75°az

99 / 1 / Tr

Survey:1484.13mMD (1267.6mTVD)
65.48°inc 142.60°az

Survey:1511.98mMD (1278.9mTVD)
67.02°inc 143.27°az

99 / 1 / Tr

Survey:1541.35mMD (1290.6mTVD)
66.02°inc 143.55°az

98 / 1 / 1 / Tr

Survey:1570.07mMD (1302.1mTVD)

CALCAREOUS CLAYSTONE:
med lt gy-lt bnsh gy,silty,
mod calc,tr disseminated pyr,
rr foss frag,sft frm,stky,
sbbkly.

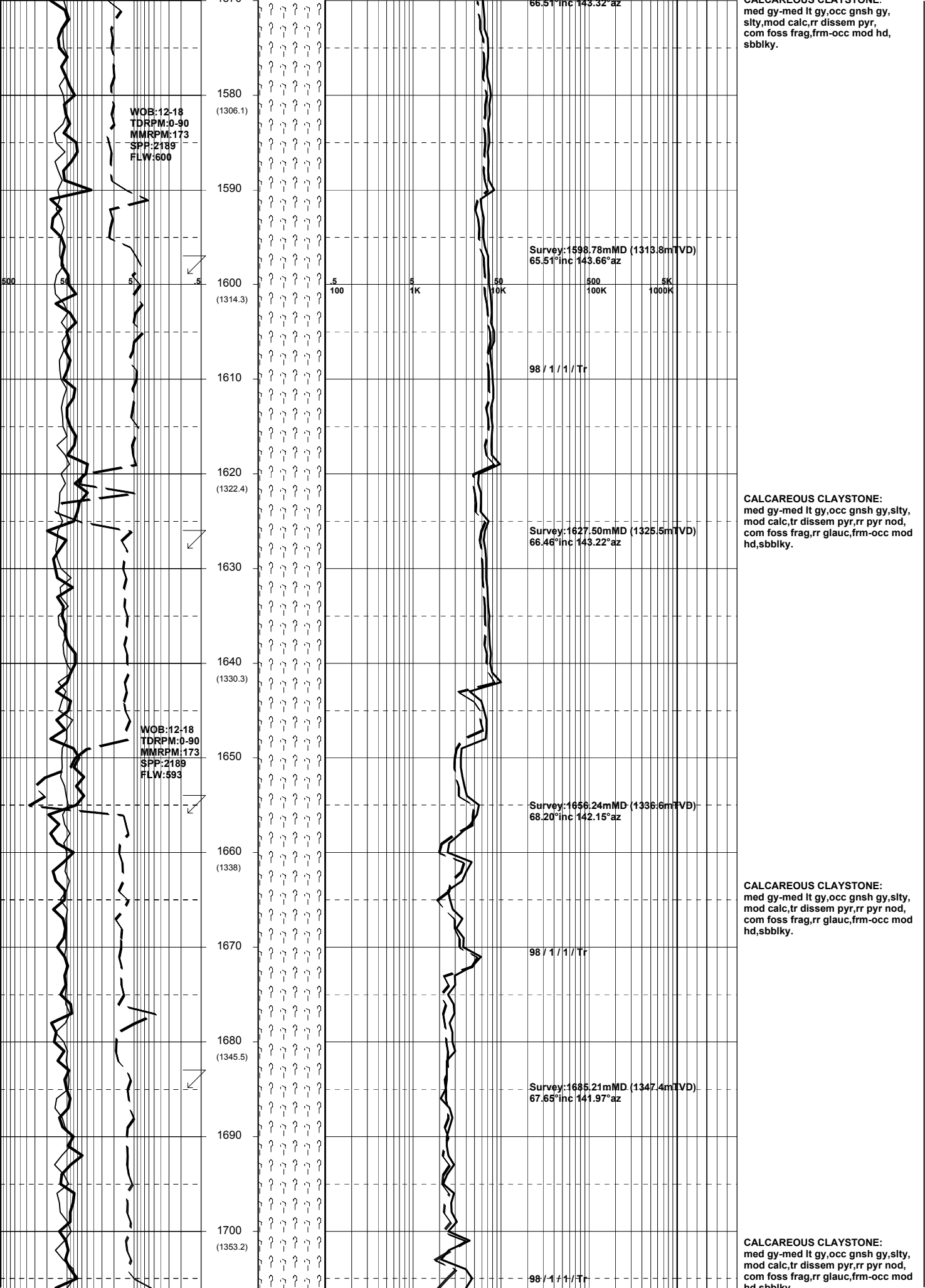
CALCAREOUS CLAYSTONE:
med lt gy-lt bnsh gy,silty,
mod calc,tr disseminated pyr,
rr foss frag,sft frm,stky,
sbbkly.

CALCAREOUS CLAYSTONE:
med lt gy-lt bnsh gy,silty,
mod calc,tr disseminated pyr,
rr foss frag,sft frm,stky,
sbbkly.

SANDSTONE:(trace),clr-trnsl,
crs-v crs,mod wl srt,sa-sr,
tr pyr cmt,clin,uncons,
fr-gd inf por,no fluor.

CALCAREOUS CLAYSTONE:
med gy-med lt gy,occ gnsh gy,
silty,mod calc,rr disseminated pyr,
com foss frag,frm-occ mod hd,
sbbkly.

CALCAREOUS CLAYSTONE:



WOB:12-18
TDRPM:0-90
MMRPM:173
SPP:2189
FLW:600

WOB:12-18
TDRPM:0-90
MMRPM:173
SPP:2189
FLW:593

Survey:1598.78mMD (1313.8mTVD)
65.51°inc 143.66°az

Survey:1627.50mMD (1325.5mTVD)
66.46°inc 143.22°az

Survey:1656.24mMD (1336.6mTVD)
68.20°inc 142.15°az

Survey:1685.21mMD (1347.4mTVD)
67.65°inc 141.97°az

CALCAREOUS CLAYSTONE:
med gy-med lt gy,occ gnsh gy,
sity,mod calc,rr disse pyr,
com foss frag,frm-occ mod hd,
sbbkly.

CALCAREOUS CLAYSTONE:
med gy-med lt gy,occ gnsh gy,sity,
mod calc,tr disse pyr,rr pyr nod,
com foss frag,rr glauc,frm-occ mod
hd,sbbkly.

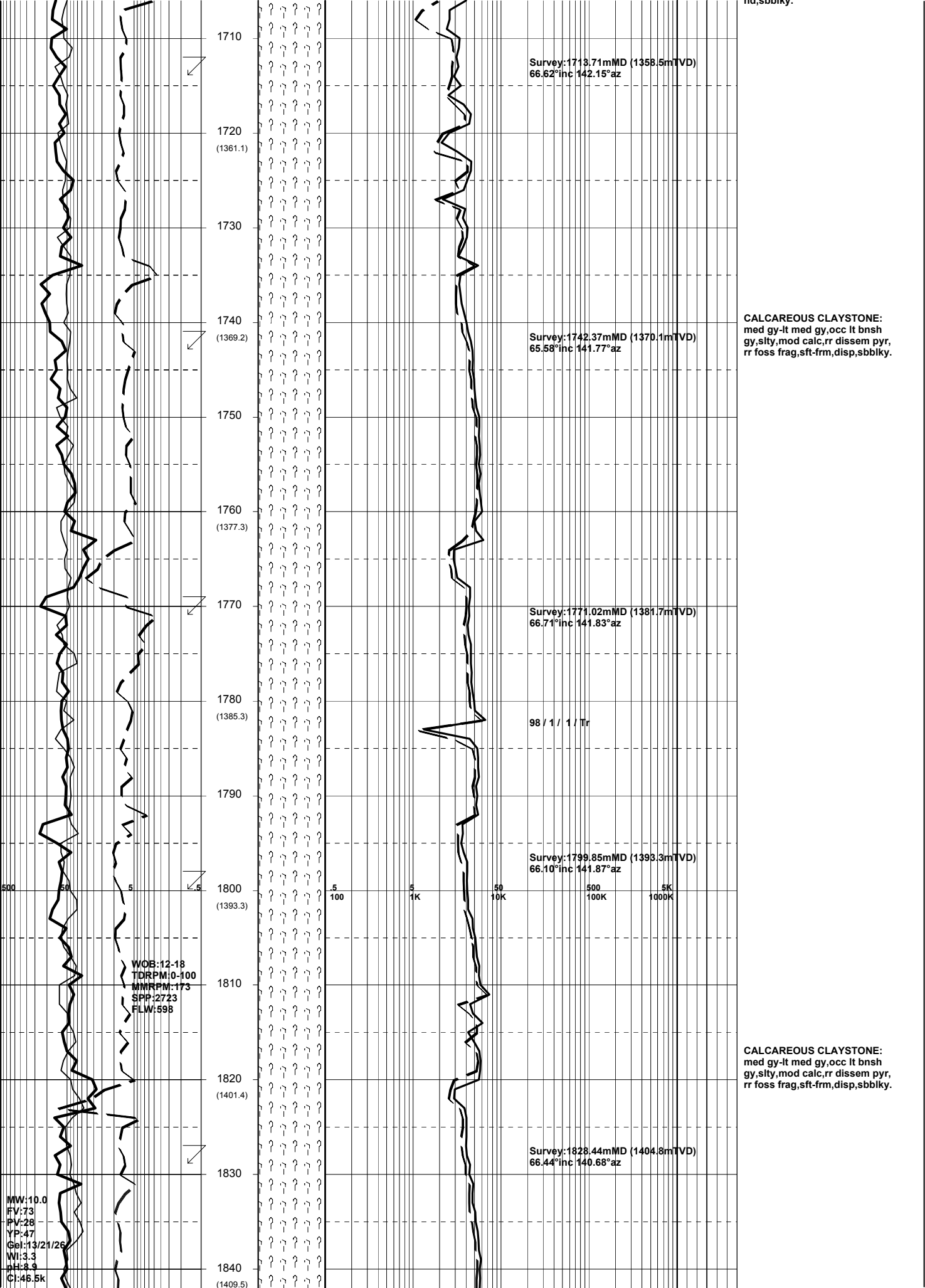
CALCAREOUS CLAYSTONE:
med gy-med lt gy,occ gnsh gy,sity,
mod calc,tr disse pyr,rr pyr nod,
com foss frag,rr glauc,frm-occ mod
hd,sbbkly.

CALCAREOUS CLAYSTONE:
med gy-med lt gy,occ gnsh gy,sity,
mod calc,rr disse pyr,rr pyr nod,
com foss frag,rr glauc,frm-occ mod
hd,sbbkly.

98 / 1 / 1 / Tr

98 / 1 / 1 / Tr

98 / 1 / 1 / Tr



1710
 1720 (1361.1)
 1730
 1740 (1369.2)
 1750
 1760 (1377.3)
 1770
 1780 (1385.3)
 1790
 1800 (1393.3)
 1810
 1820 (1401.4)
 1830
 1840 (1409.5)

Survey:1713.71mMD (1358.5mTVD)
 66.62°inc 142.15°az

Survey:1742.37mMD (1370.1mTVD)
 65.58°inc 141.77°az

Survey:1771.02mMD (1381.7mTVD)
 66.71°inc 141.83°az

Survey:1799.85mMD (1393.3mTVD)
 66.10°inc 141.87°az

Survey:1828.44mMD (1404.8mTVD)
 66.44°inc 140.68°az

CALCAREOUS CLAYSTONE:
 med gy-lt med gy,occ lt bnsh
 gy,silty,mod calc,rr dissem pyr,
 rr foss frag,sft frm,disp,sbbiky.

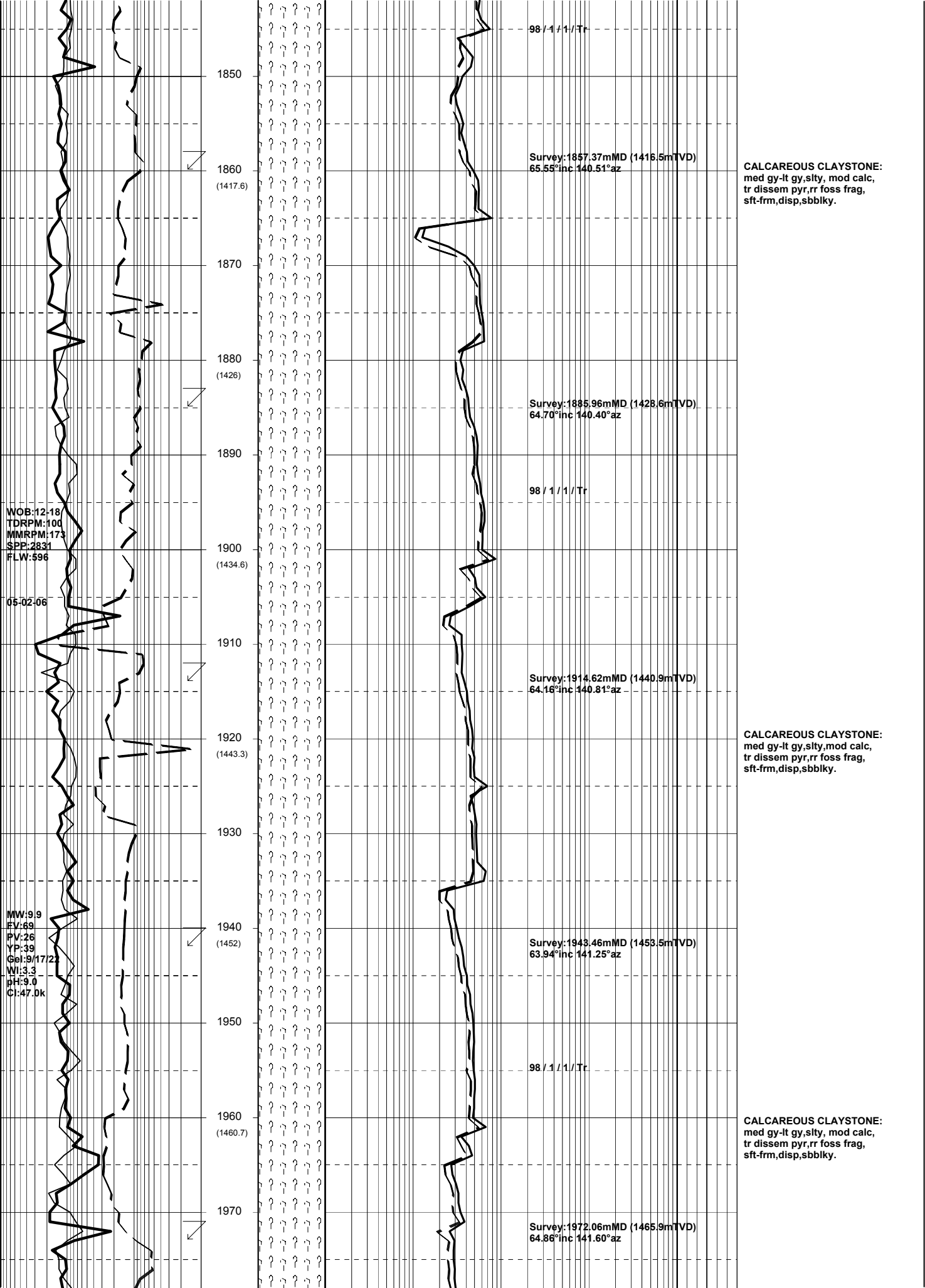
CALCAREOUS CLAYSTONE:
 med gy-lt med gy,occ lt bnsh
 gy,silty,mod calc,rr dissem pyr,
 rr foss frag,sft frm,disp,sbbiky.

98 / 1 / 1 / Tr

WOB:12-18
 TDRPM:0-100
 MMRPM:173
 SPP:2723
 FLW:598

MW:10.0
 FV:73
 PV:28
 YP:47
 Gel:13/21/26
 WI:3.3
 pH:8.9
 CI:46.5k

5 5 50 500 5K
 100 1K 10K 100K 1000K



1850
1860 (1417.6)
1870
1880 (1426)
1890
1900 (1434.6)
1910
1920 (1443.3)
1930
1940 (1452)
1950
1960 (1460.7)
1970

98 / 1 / 1 / Tr

Survey: 1857.37mMD (1418.5mTVD)
65.55°inc 140.51°az

Survey: 1885.96mMD (1428.6mTVD)
64.70°inc 140.40°az

98 / 1 / 1 / Tr

Survey: 1914.62mMD (1440.9mTVD)
64.16°inc 140.81°az

Survey: 1943.46mMD (1453.5mTVD)
63.94°inc 141.25°az

98 / 1 / 1 / Tr

Survey: 1972.06mMD (1465.9mTVD)
64.86°inc 141.60°az

CALCAREOUS CLAYSTONE:
med gy-lt gy,silty, mod calc,
tr dissem pyr,rr foss frag,
sft-frm,disp,sbblky.

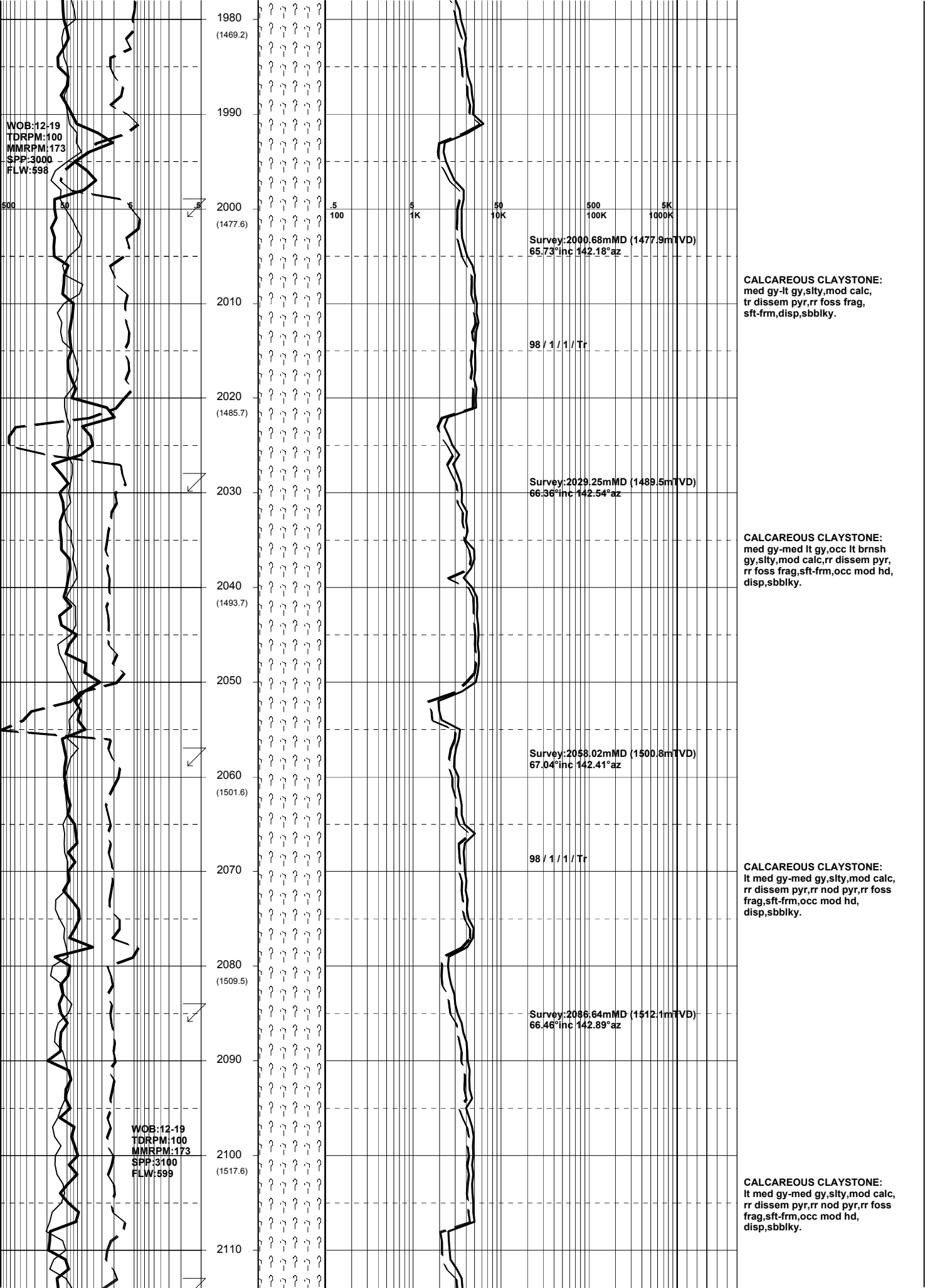
CALCAREOUS CLAYSTONE:
med gy-lt gy,silty,mod calc,
tr dissem pyr,rr foss frag,
sft-frm,disp,sbblky.

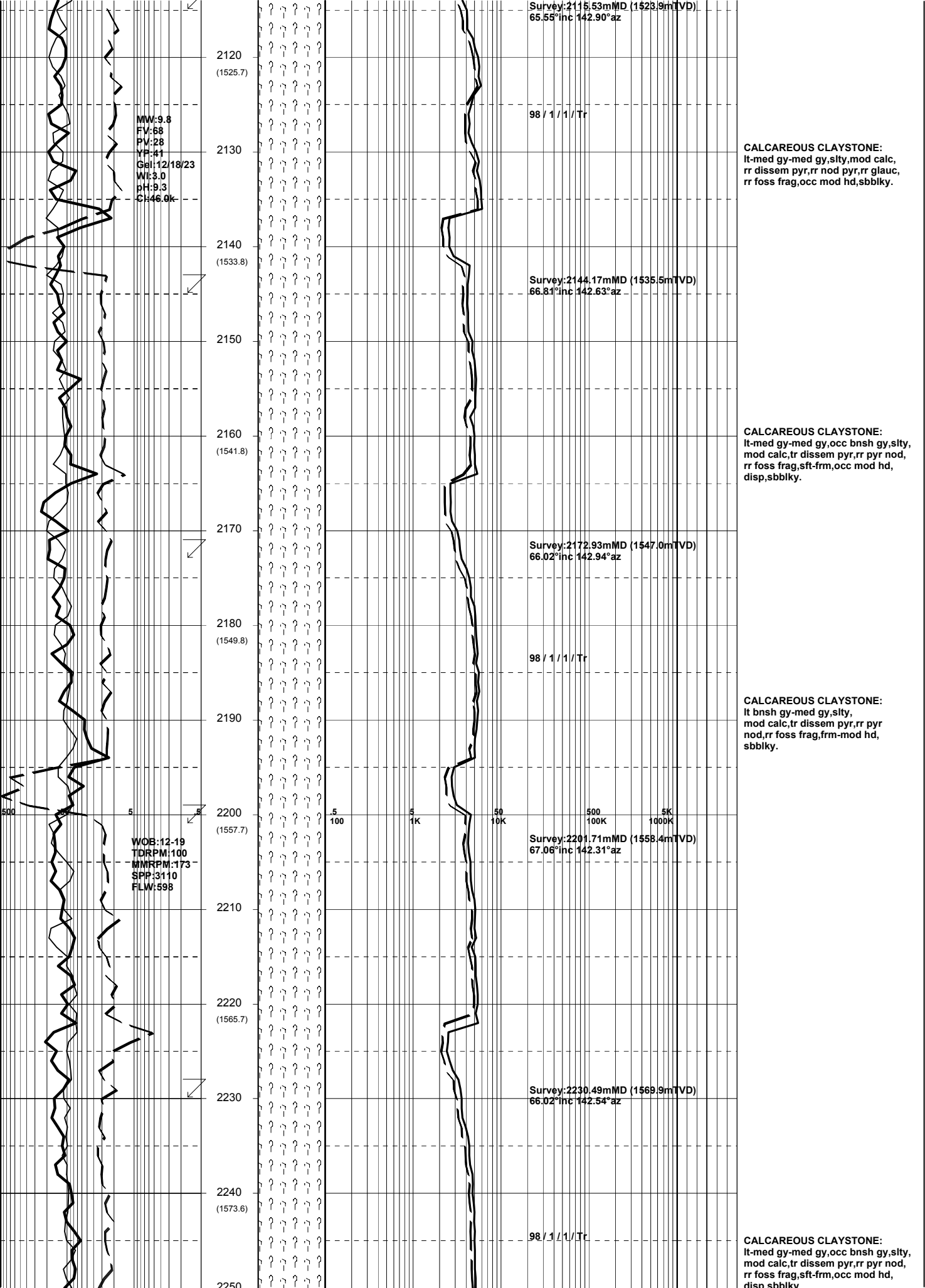
CALCAREOUS CLAYSTONE:
med gy-lt gy,silty, mod calc,
tr dissem pyr,rr foss frag,
sft-frm,disp,sbblky.

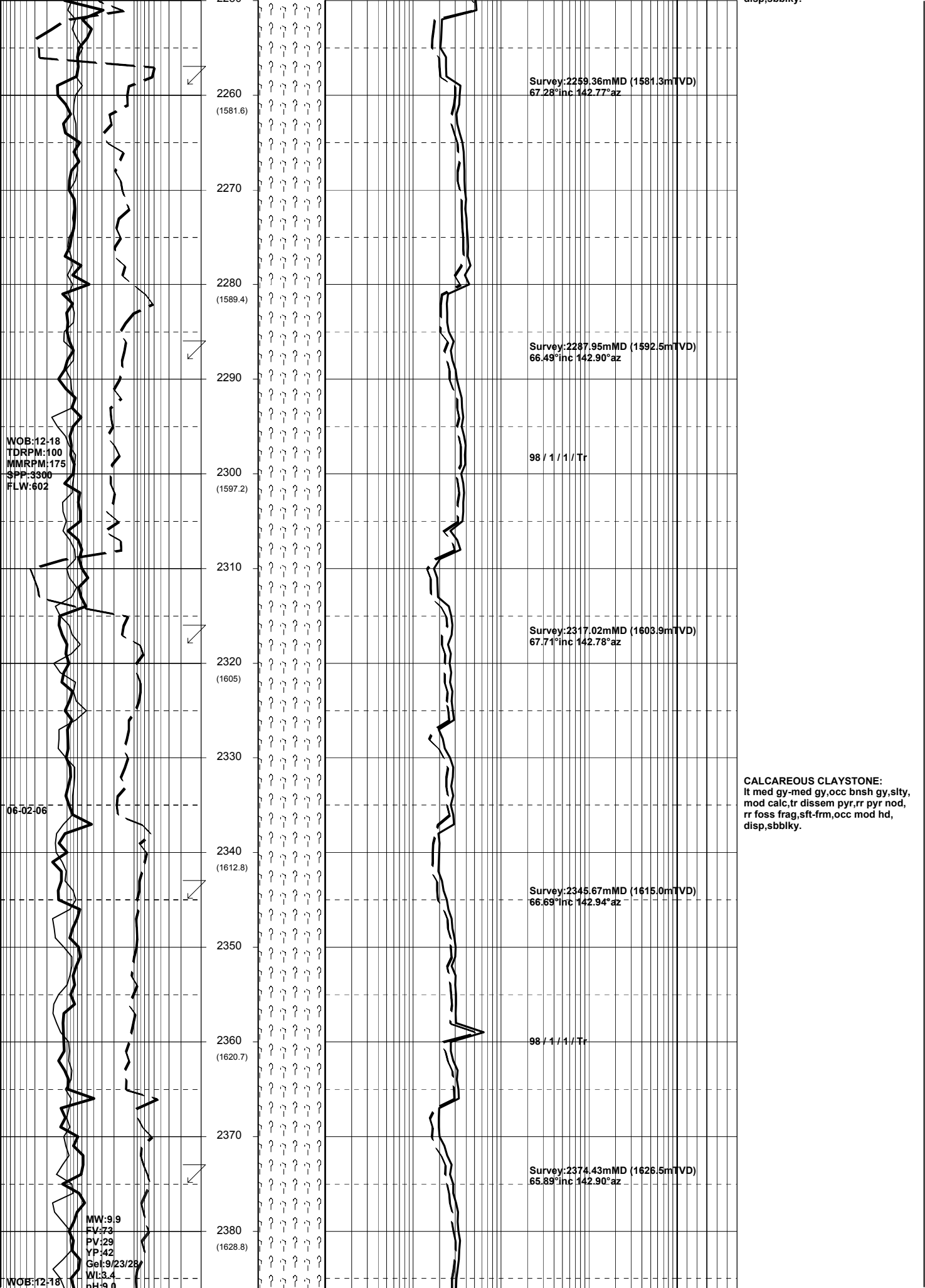
WOB:12-18
TDRPM:100
MMRPM:173
SPP:2831
FLW:596

05-02-06

MW:9.9
FV:69
PV:26
YP:39
Gel:9/17/22
WI:3.3
pH:9.0
Cl:47.0k







2260
(1581.6)

Survey:2259.36mMD (1581.3mTVD)
67.28°inc 142.77°az

2270

2280
(1589.4)

Survey:2287.95mMD (1592.5mTVD)
66.49°inc 142.90°az

2290

WOB:12-18
TDRPM:100
MMRPM:175
SPP:3500
FLW:602

2300
(1597.2)

98 / 1 / 1 / Tr

2310

2320
(1605)

Survey:2317.02mMD (1603.9mTVD)
67.71°inc 142.78°az

2330

06-02-06

2340
(1612.8)

Survey:2345.67mMD (1615.0mTVD)
66.69°inc 142.94°az

2350

2360
(1620.7)

98 / 1 / 1 / Tr

2370

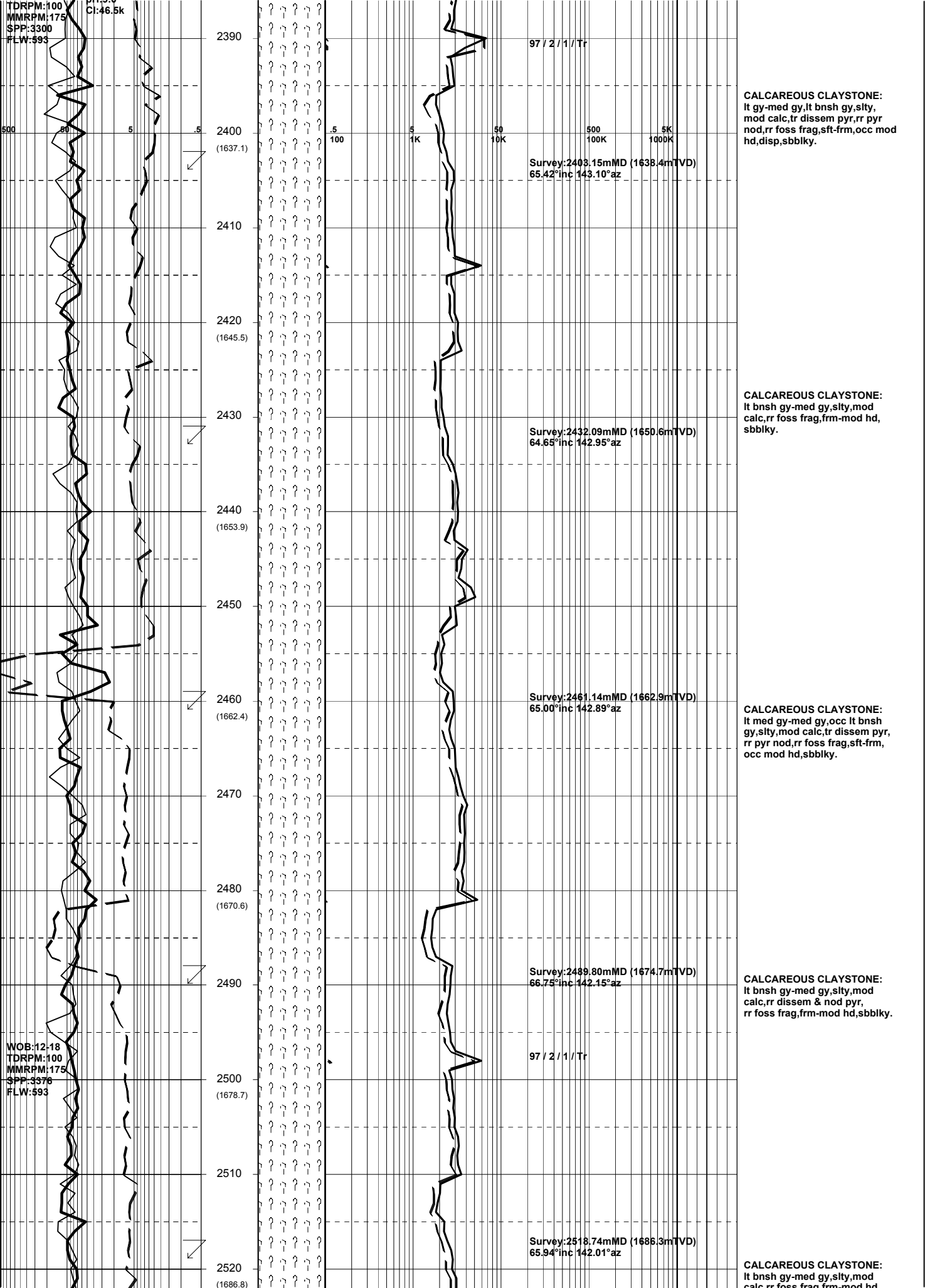
2380
(1628.8)

Survey:2374.43mMD (1625.5mTVD)
65.89°inc 142.90°az

CALCAREOUS CLAYSTONE:
lt med gy-med gy,occ bnsh gy,silty,
mod calc.tr disseminated pyr,rr pyr nod,
rr foss frag,sft frm,occ mod hd,
disp,sbbkly.

MW:9.9
FV:72
PV:29
YP:42
Gel:9/23/28
Wt:3.4
pH:9.0

WOB:12-18



TDRPM:100
MMRPM:175
SPP:3300
FLW:593

C1:46.5k

2390

97 / 2 / 1 / Tr

CALCAREOUS CLAYSTONE:
lt gy-med gy,lt bnsh gy,slty,
mod calc,tr disse pyr,rr pyr
nod,rr foss frag,sft frm,occ mod
hd,disp,sbbkly.

2400
(1637.1)

Survey:2403.15mMD (1638.4mTVD)
65.42°inc 143.10°az

2410

2420
(1645.5)

2430

Survey:2432.09mMD (1650.6mTVD)
64.65°inc 142.95°az

CALCAREOUS CLAYSTONE:
lt bnsh gy-med gy,slty,mod
calc,rr foss frag,frm-mod hd,
sbbkly.

2440
(1653.9)

2450

2460
(1662.4)

Survey:2461.14mMD (1662.9mTVD)
65.00°inc 142.89°az

CALCAREOUS CLAYSTONE:
lt med gy-med gy,occ lt bnsh
gy,slty,mod calc,tr disse pyr,
rr pyr nod,rr foss frag,sft frm,
occ mod hd,sbbkly.

2470

2480
(1670.6)

2490

Survey:2489.80mMD (1674.7mTVD)
66.75°inc 142.15°az

CALCAREOUS CLAYSTONE:
lt bnsh gy-med gy,slty,mod
calc,rr disse & nod pyr,
rr foss frag,frm-mod hd,sbbkly.

2500
(1678.7)

97 / 2 / 1 / Tr

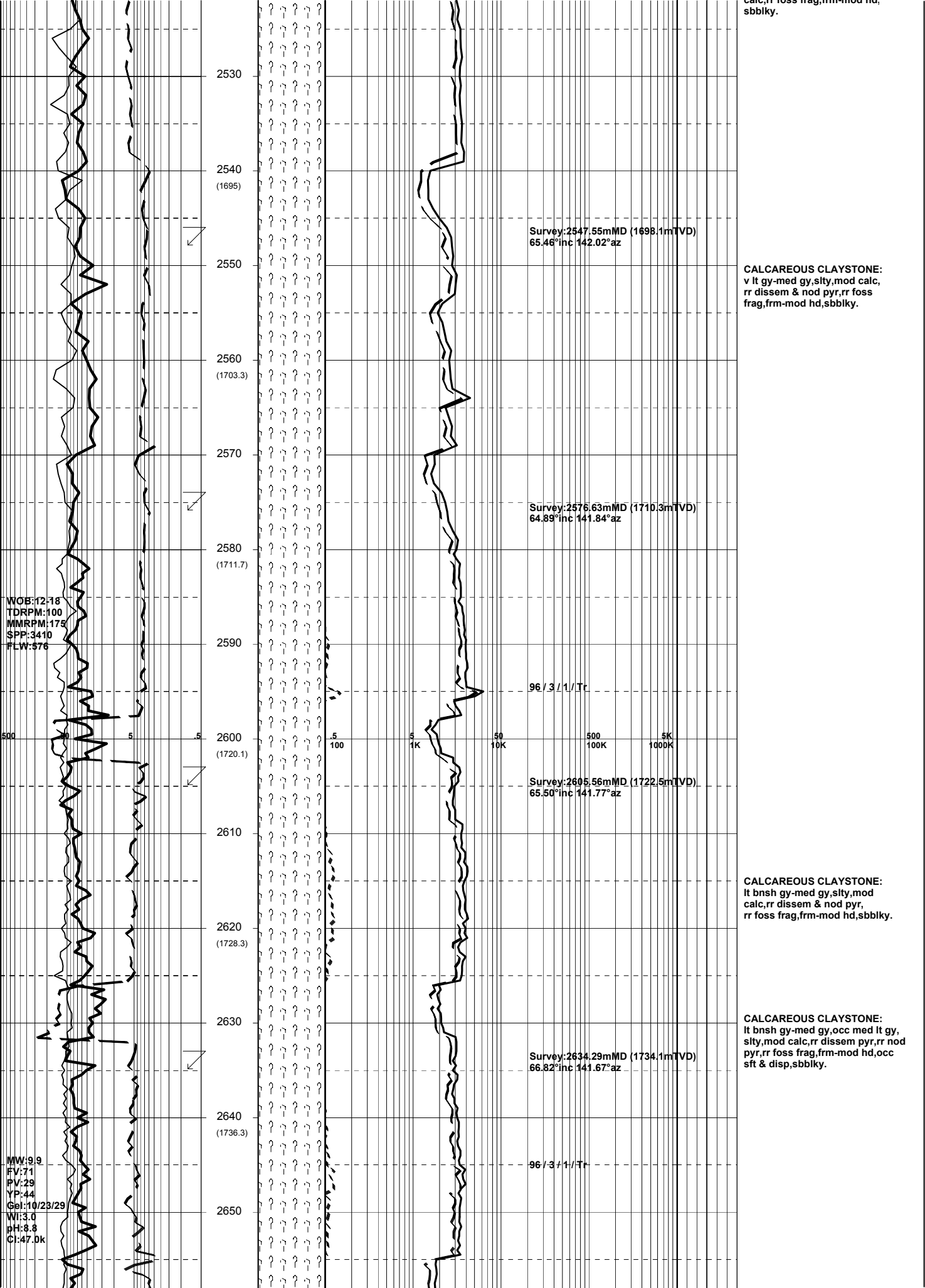
WOB:12-18
TDRPM:100
MMRPM:175
SPP:3376
FLW:593

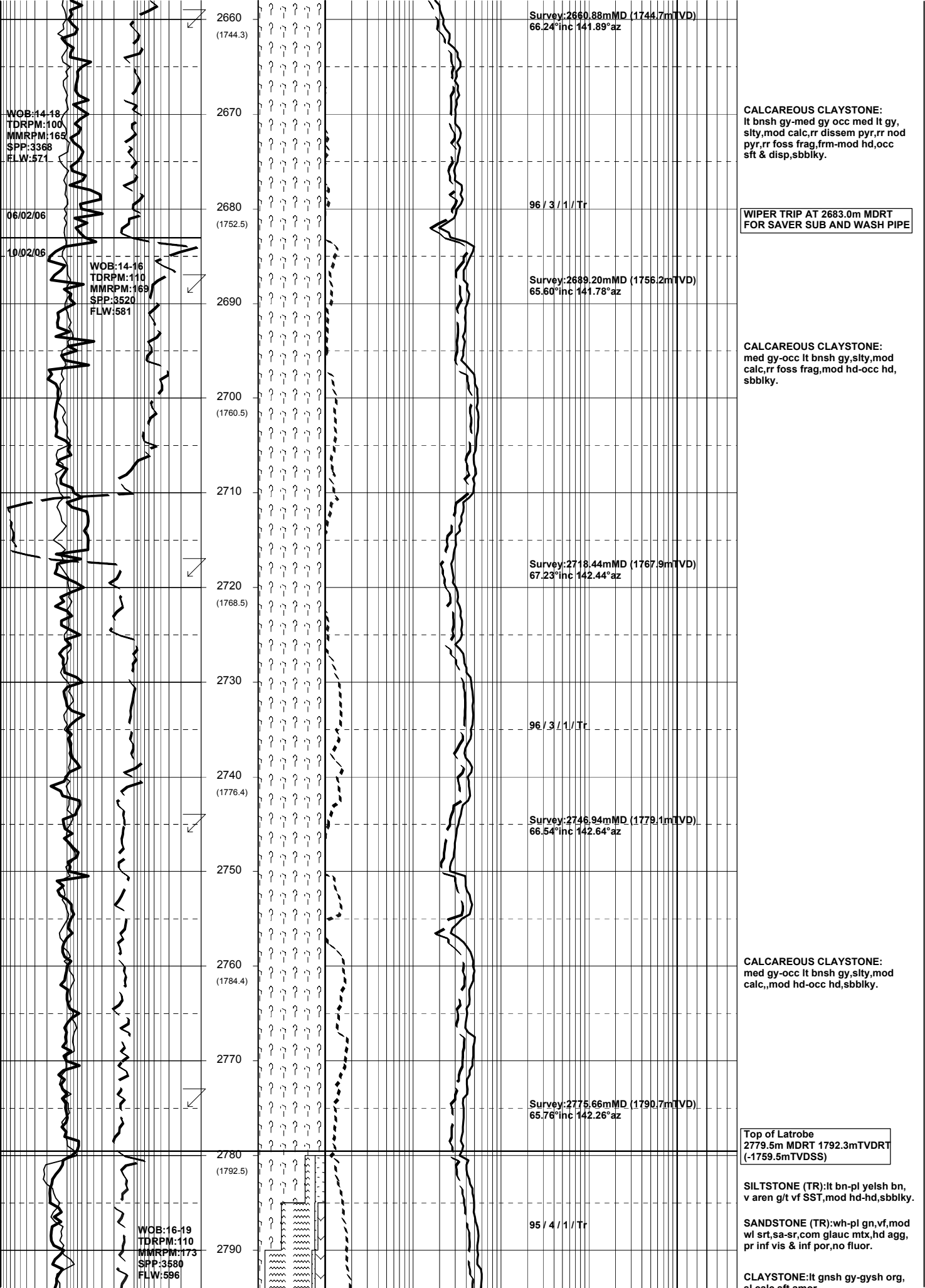
2510

2520
(1686.8)

Survey:2518.74mMD (1686.3mTVD)
65.94°inc 142.01°az

CALCAREOUS CLAYSTONE:
lt bnsh gy-med gy,slty,mod
calc,rr foss frag,frm-mod hd





Survey:2660.88mMD (1744.7mTVD)
66.24°inc 141.89°az

WOB:14-18
TDRPM:100
MMRPM:165
SPP:3368
FLW:571

CALCAREOUS CLAYSTONE:
lt bnsh gy-med gy occ med lt gy,
silty,mod calc,rr dissem pyr,rr nod
pyr,rr foss frag,frm-mod hd,occ
sft & disp,sbbiky.

06/02/06

10/02/06

WOB:14-16
TDRPM:110
MMRPM:169
SPP:3520
FLW:581

96 / 3 / 1 / Tr

**WIPER TRIP AT 2683.0m MDRT
FOR SAVER SUB AND WASH PIPE**

Survey:2689.20mMD (1756.2mTVD)
65.60°inc 141.78°az

CALCAREOUS CLAYSTONE:
med gy-occ lt bnsh gy,silty,mod
calc,rr foss frag,mod hd-occ hd,
sbbiky.

Survey:2718.44mMD (1767.9mTVD)
67.23°inc 142.44°az

96 / 3 / 1 / Tr

Survey:2746.94mMD (1779.1mTVD)
66.54°inc 142.64°az

CALCAREOUS CLAYSTONE:
med gy-occ lt bnsh gy,silty,mod
calc,,mod hd-occ hd,sbbiky.

Survey:2775.66mMD (1790.7mTVD)
65.76°inc 142.26°az

Top of Latrobe
2779.5m MDRT 1792.3mTVDRT
(-1759.5mTVDSS)

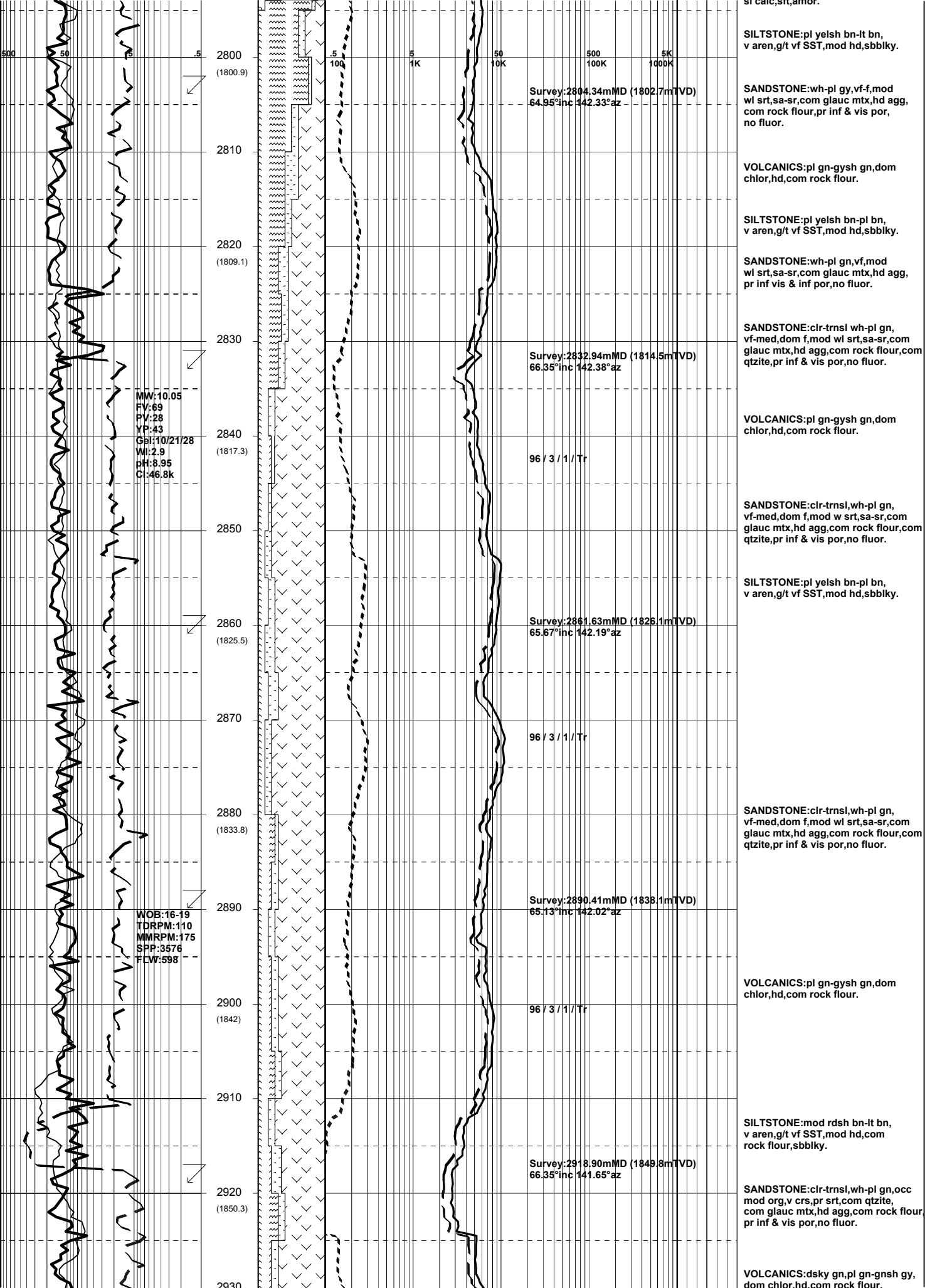
SILTSTONE (TR):lt bn-pl yelsh bn,
v aren g/t vf SST,mod hd-hd,sbbiky.

WOB:16-19
TDRPM:110
MMRPM:173
SPP:3580
FLW:596

95 / 4 / 1 / Tr

SANDSTONE (TR):wh-pl gn,vf,mod
wl srt,sa-sr,com glauc mtx,hd agg,
pr inf vis & inf por,no fluor.

CLAYSTONE:lt gnsh gy-gysh org,
clack,oft am...



sr calc, str, amor.

SILTSTONE: pl yelsh bn-lt bn, v aren, g/t vf SST, mod hd, sbbkly.

Survey: 2804.34mMD (1802.7mTVD)
64.95° inc 142.33° az

SANDSTONE: wh-pl gy, vf-f, mod wl srt, sa-sr, com glauc mtx, hd agg, com rock flour, pr inf & vis por, no fluor.

VOLCANICS: pl gn-gysh gn, dom chlor, hd, com rock flour.

SILTSTONE: pl yelsh bn-pl bn, v aren, g/t vf SST, mod hd, sbbkly.

SANDSTONE: wh-pl gn, vf, mod wl srt, sa-sr, com glauc mtx, hd agg, pr inf vis & inf por, no fluor.

SANDSTONE: clr-trnsl wh-pl gn, vf-med, dom f, mod wl srt, sa-sr, com glauc mtx, hd agg, com rock flour, com qtzite, pr inf & vis por, no fluor.

MW: 10.05
FV: 69
PV: 28
YP: 43
Gel: 10/21/28
WI: 2.9
pH: 8.95
C: 46.8k

VOLCANICS: pl gn-gysh gn, dom chlor, hd, com rock flour.

SANDSTONE: clr-trnsl, wh-pl gn, vf-med, dom f, mod wl srt, sa-sr, com glauc mtx, hd agg, com rock flour, com qtzite, pr inf & vis por, no fluor.

SILTSTONE: pl yelsh bn-pl bn, v aren, g/t vf SST, mod hd, sbbkly.

Survey: 2861.63mMD (1825.1mTVD)
65.67° inc 142.19° az

96 / 3 / 1 / Tr

SANDSTONE: clr-trnsl, wh-pl gn, vf-med, dom f, mod wl srt, sa-sr, com glauc mtx, hd agg, com rock flour, com qtzite, pr inf & vis por, no fluor.

WOB: 16-19
TDRPM: 110
MMRPM: 175
SPP: 3576
FLW: 598

Survey: 2890.41mMD (1838.1mTVD)
65.13° inc 142.02° az

VOLCANICS: pl gn-gysh gn, dom chlor, hd, com rock flour.

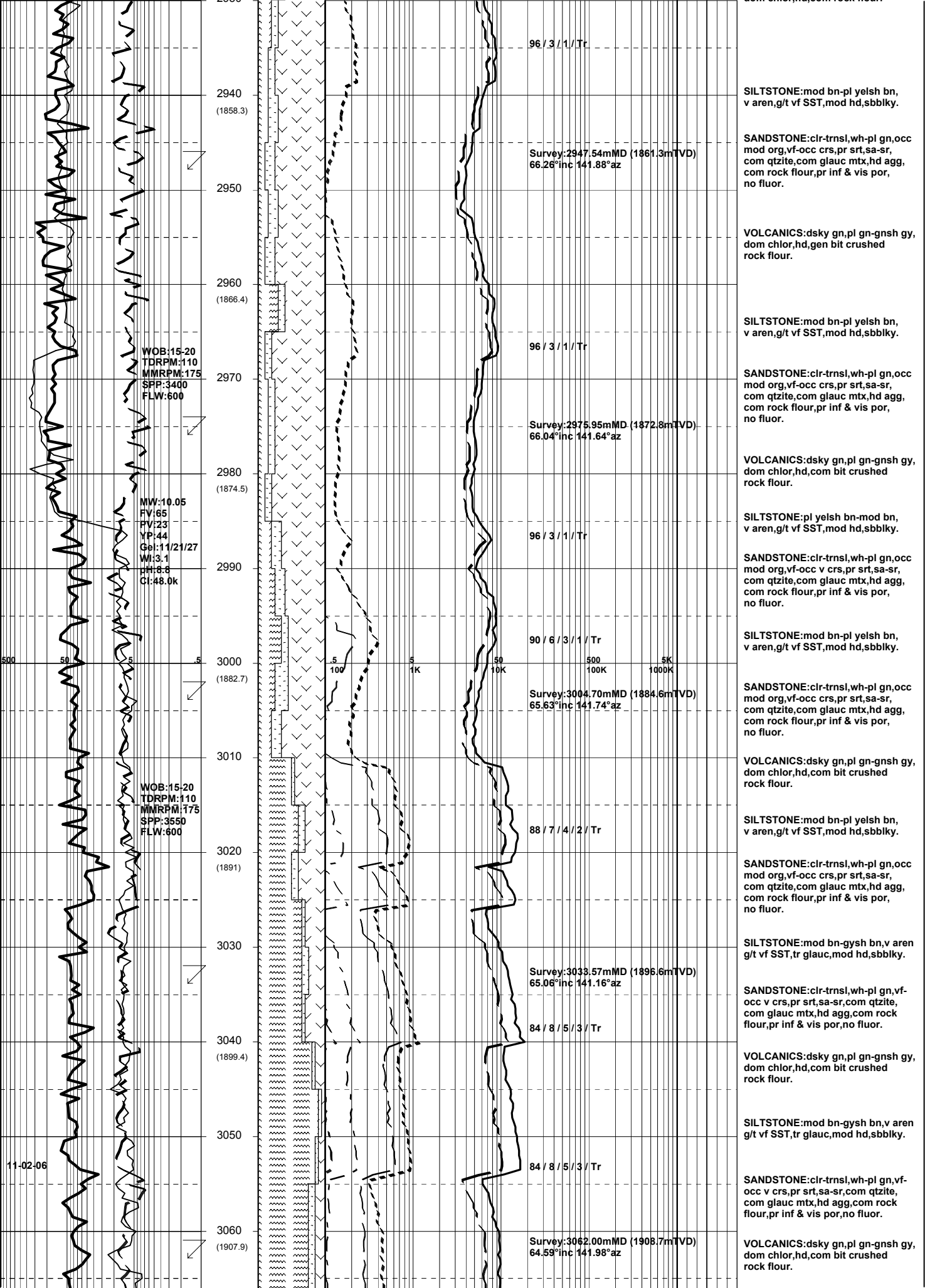
96 / 3 / 1 / Tr

SILTSTONE: mod rdsh bn-lt bn, v aren, g/t vf SST, mod hd, com rock flour, sbbkly.

Survey: 2918.90mMD (1849.8mTVD)
66.35° inc 141.65° az

SANDSTONE: clr-trnsl, wh-pl gn, occ mod org, v crs, pr srt, com qtzite, com glauc mtx, hd agg, com rock flour, pr inf & vis por, no fluor.

VOLCANICS: dsky gn, pl gn-gnsh gy, dom chlor, hd, com rock flour.

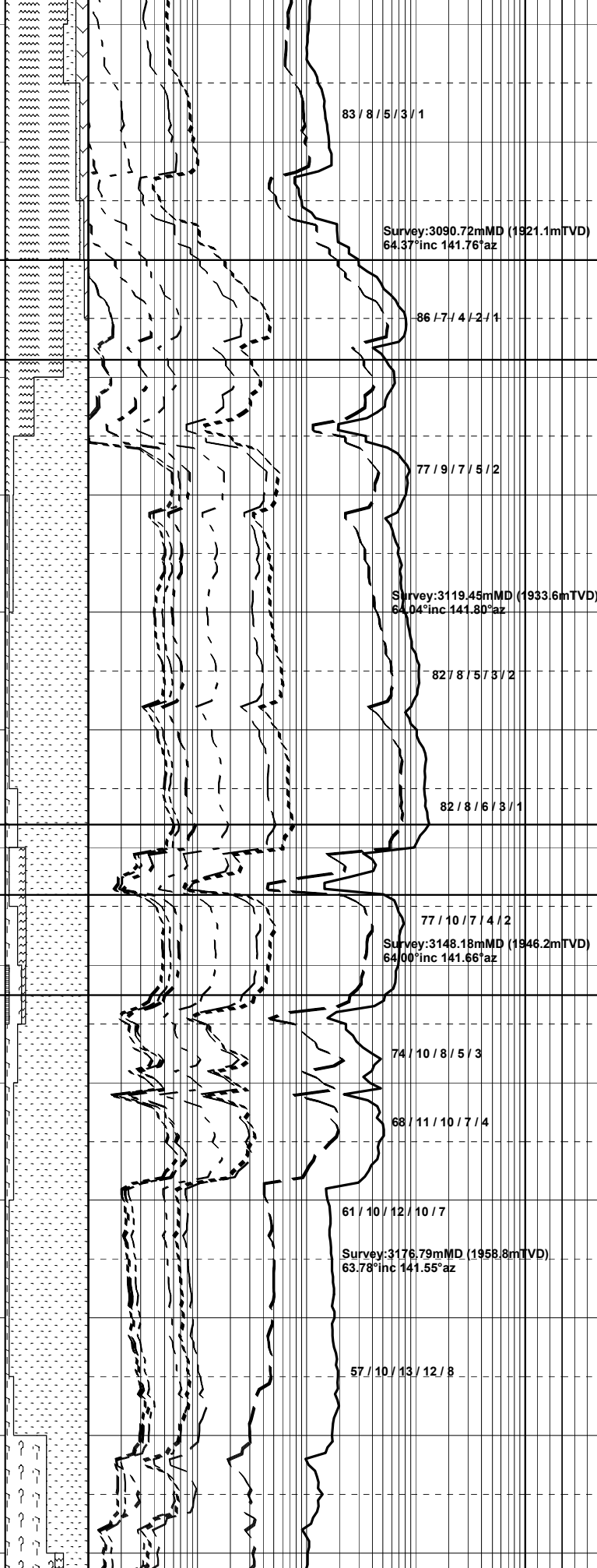


WOB:17-20
TDRPM:105
MMRPM:170
SPP:3550
FLW:585

WOB:10-15
TDRPM:110
MMRPM:173
SPP:3550
FLW:595

WOB:10-15
TDRPM:107
MMRPM:172
SPP:3390
FLW:594

MW:10.0
FV:69
PV:28
YP:43
Gel:11/20
Wf:2.9
pH:8.9
Cl:48.0k



SILTSTONE:mod bn-occ pa yelsh bn, aren,g/t vf SST,rr glauc,mod hd, com rock flour,sbbiky.

SANDSTONE:clr-trnsl,wh-pl gn,vf-occ v crs,pr srt,sa-sr,com qtzite, com pell glauc,hd agg,com rock flour,pr inf & vis por,no fluor.

VOLCANICS:dsky gn,gysch gn, dom chlor,hd,com bit crushed rock flour.

TCC (N-1 Reservoir)
3090.0m MDRT 1920.8mTVDRT (-1888.0mTVDSS)

SANDSTONE:1)clr-trnsl,f-occ v crs, dom med-crs,pr srt,sa-sr,wk pyr cmt, tr pyr nod,lse,cln,fr inf & vis por. SANDSTONE:2)trnsl-med lt gy,vf-f, mod wl srt,sa-sr,mod sil cmt,abdt mic pyr,mtx,hd agg,ti vis & inf por,no fluor.

Base of Waste
3098.5m MDRT 1924.5mTVDRT (-1891.7mTVDSS)

SILTSTONE:mod bn-gysch bn,v aren g/t vf SST,rr pell glauc,mod hd, sbbiky.

CLAYSTONE:med-lt gy-lt blsh gy, mod calc,mod hd-hd,sbbiky-blky.

SANDSTONE:clr-trnsl,crs-dom v crs,mod wl srt,sa-sr,com frac qtz gm,mod pyr cmt,com pyr nod, lse,cln,fr-gd inf/vis por,no fluor.

SANDSTONE:clr-trnsl,crs-dom v crs,mod wl srt,sa-sr,com frac qtz gm,mod pyr cmt,com pyr nod, lse,cln,fr-gd inf/vis por,rr-5% RADIAGREEN fluor.

SANDSTONE:clr-trnsl,med-v crs, dom crs,mod wl srt,sr-sa,wk pyr cmt, rr pyr nod,lse,cln,fr-gd inf/vis por, no fluor.

CBF2 horizon (Cobalt sand)
3138.0m MDRT 1941.7m TVDRT (-1908.9m TVDSS)

CBF1
3144.0m MDRT 1944.4m TVDRT (-1911.6m TVDSS)

CLAYSTONE:1)med-lt gy-lt blsh gy, mod calc,mod hd-hd,sbbiky-blky. CLAYSTONE:2)off wh,sft,disp,amor.

CBSB
3152.5m MDRT 1948.1m TVDRT (-1925.3m TVDSS)

COAL:dsky bn,slty g/t CARB SLST, ea,frm,sbbiky,unevn,wdy tex.

SANDSTONE:clr-trnsl,rr gysch pnk org,crs-dom v crs,mod wl srt,sa-sr, wk pyr cmt,rr pyr nod,lse,cln,fr-gd inf/vis por,no fluor.

SILTSTONE:mod bn-gysch bn,v aren g/t vf SST,rr glauc,mod hd,sbbiky.

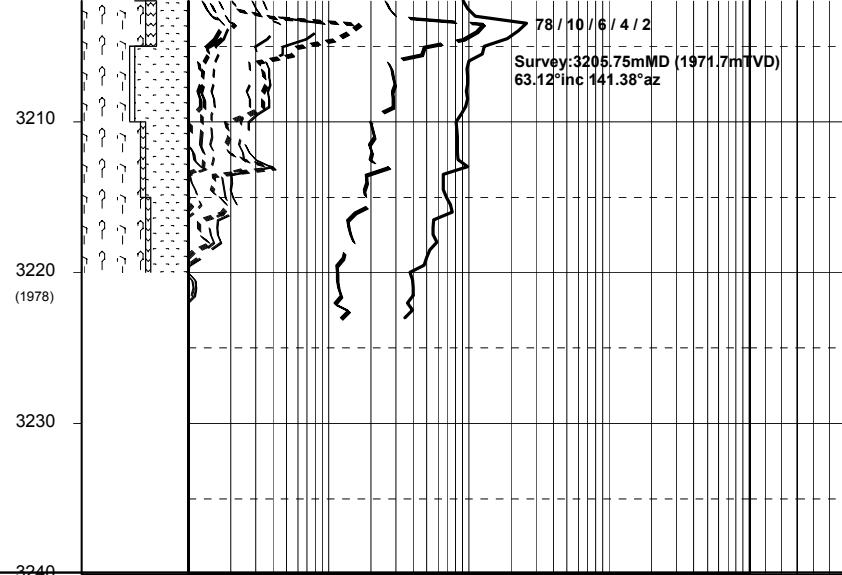
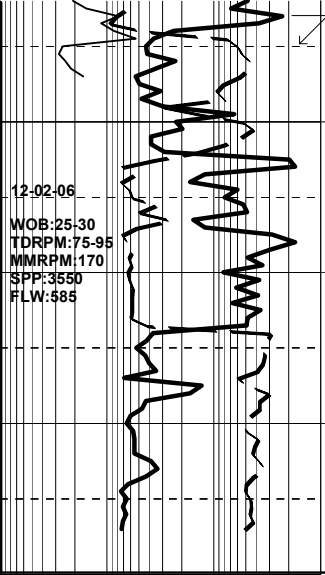
SANDSTONE:clr-trnsl,vf-occ crs, pr srt,sa-sr,wk pyr cmt,dom lse,gen cln,pr-fr inf/vis por,no fluor.

SANDSTONE:clr-trnsl,rr gysch pnk,f-v crs dom med-crs,mod wl srt, sa-sr,occ rnd,wk pyr cmt,rr pyr nod,lse,cln,fr-gd inf/vis por,no fluor.

SANDSTONE:clr-trnsl,f-v crs, dom med-crs,mod wl srt,sa-sr, occ rnd,wk pyr cmt,rr pyr nod, lse,cln,fr inf/vis por,no fluor.

TRIP TO 2308.0m MDRT FOR WASHOUT

CLAYSTONE:med lt gy-med gy,non-s calc,mod hd-hd,sbbiky.



Survey: 3205.75mMD (1971.7mTVD)
63.12°inc 141.38°az

SANDSTONE:clr-trnsl,occ med-dom,
v crs,mod wl srt,sa-sr,com frac
qtz grn,mod pyr cmt,rr pyr nod,dom
lse,gen cln,pr inf/vis por,no fluor.

SILTSTONE:mod bn-dsky bn,v aren
g/t vf SST,mod hd,sbblky.

SANDSTONE:clr-trnsl,crs-dom v crs,
mod wl srt,sa-sr,com frac qtz grn,
mod-str pyr cmt,tr pyr nod,dom
lse,gen cln,pr inf/vis por,no fluor.

12-02-06
WOB:25-30
TDRPM:75-95
MMRPM:170
SPP:3550
FLW:585

3210
3220
(1978)
3230
3240